

BUCK ROGERS

IN THE 25TH CENTURY

LAND ROVER Mk. II

1:32 SCALE



A BUCK ROGERS FAN PRODUCTION

This cardmodel is free. It is a non-profit fan project and for personal use only. No commercial use.

Paper model created by Revell-Fan 11/2016. Many thanks to Rhaven Blaack for test-building and providing pictures of the vehicle with recessed windows.

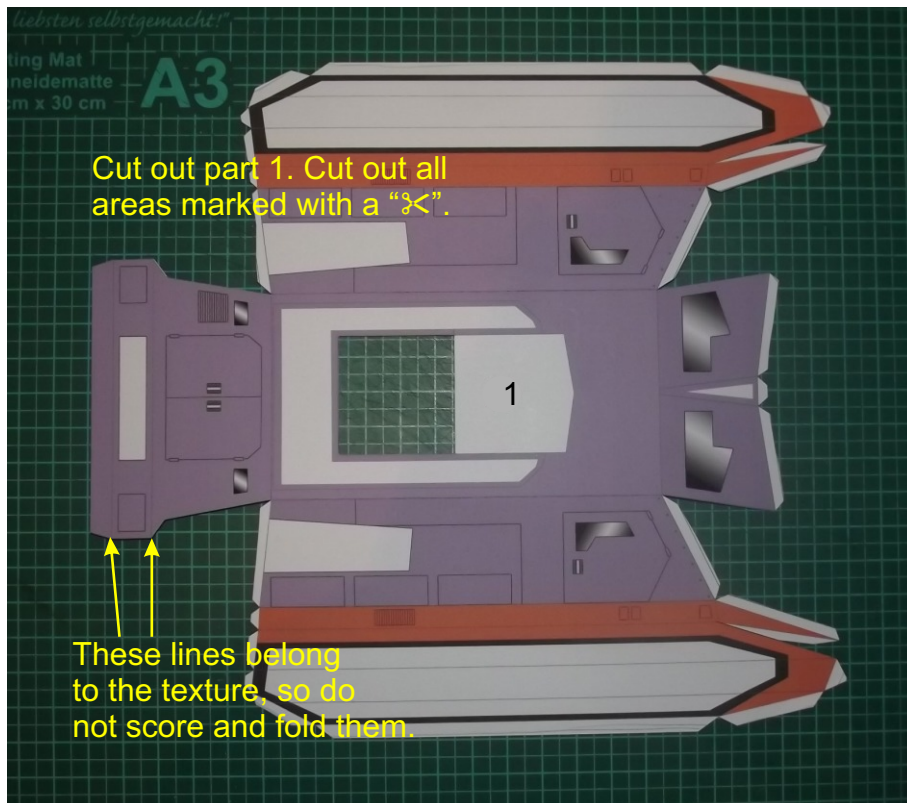
Buck Rogers and all related marks, logos and characters are solely owned by Universal Studios & Robert C. Dille. This fan production is not endorsed by, sponsored by, nor affiliated with Universal Pictures, Robert C. Dille, or any other Buck Rogers franchise, and is a non-commercial fan-made model intended for recreational use. No commercial exhibition or distribution is permitted. No alleged independent rights will be asserted against Universal Pictures or Robert C. Dille. No infringement intended.

Please post pictures of your builds on www.zealot.com.

Have fun and enjoy!

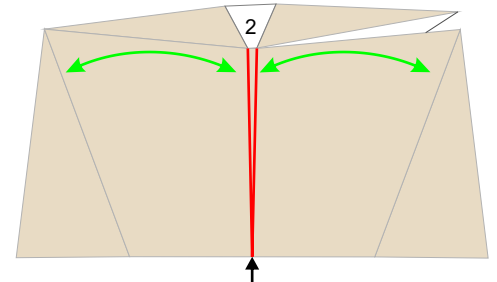


11/2016

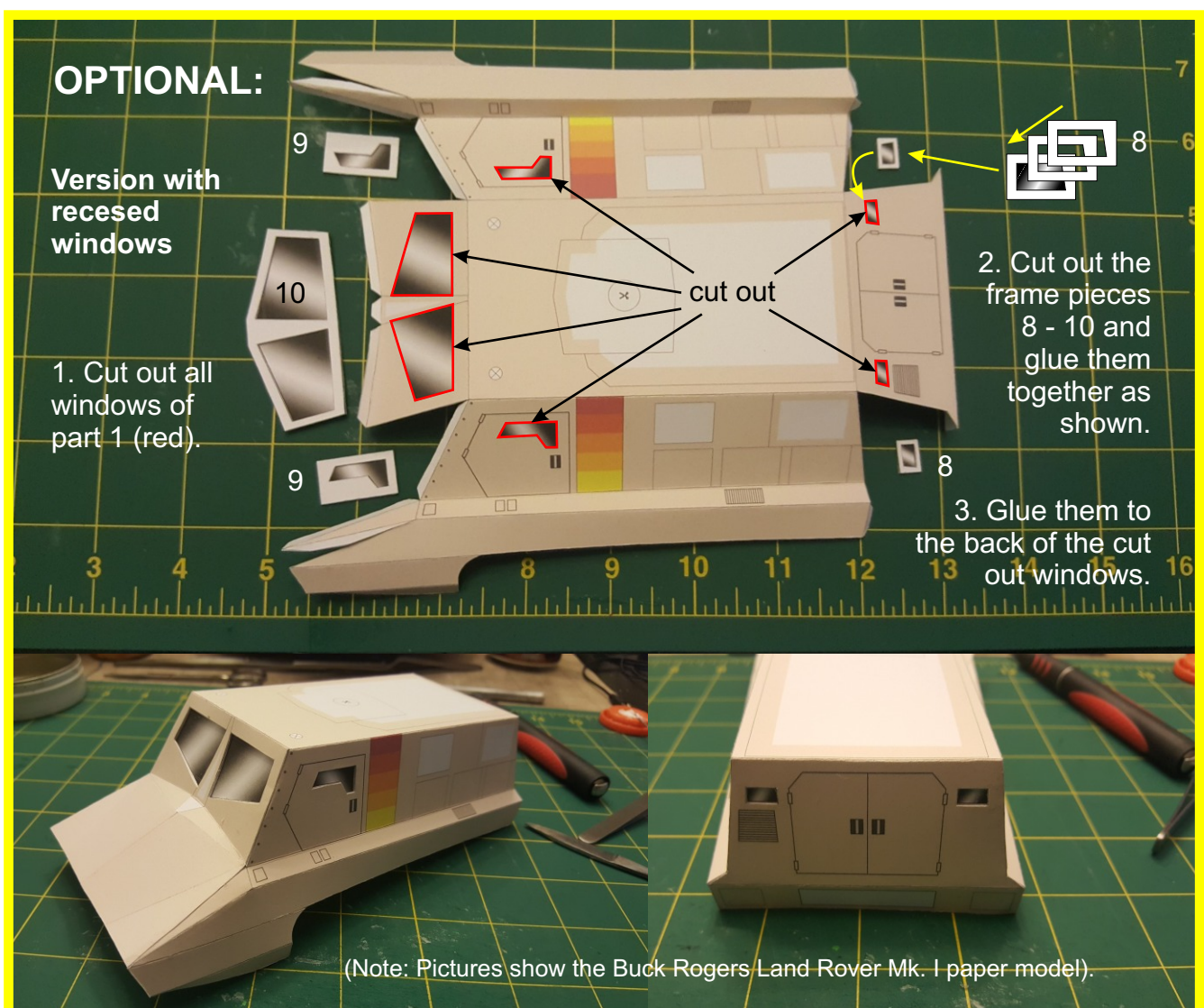


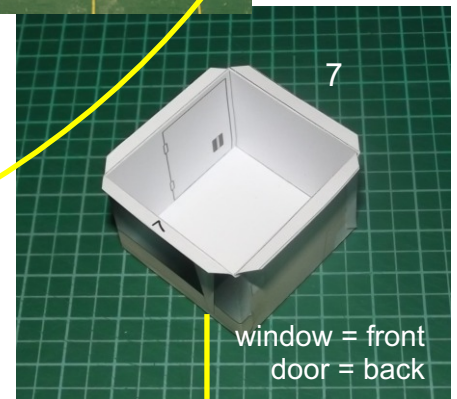
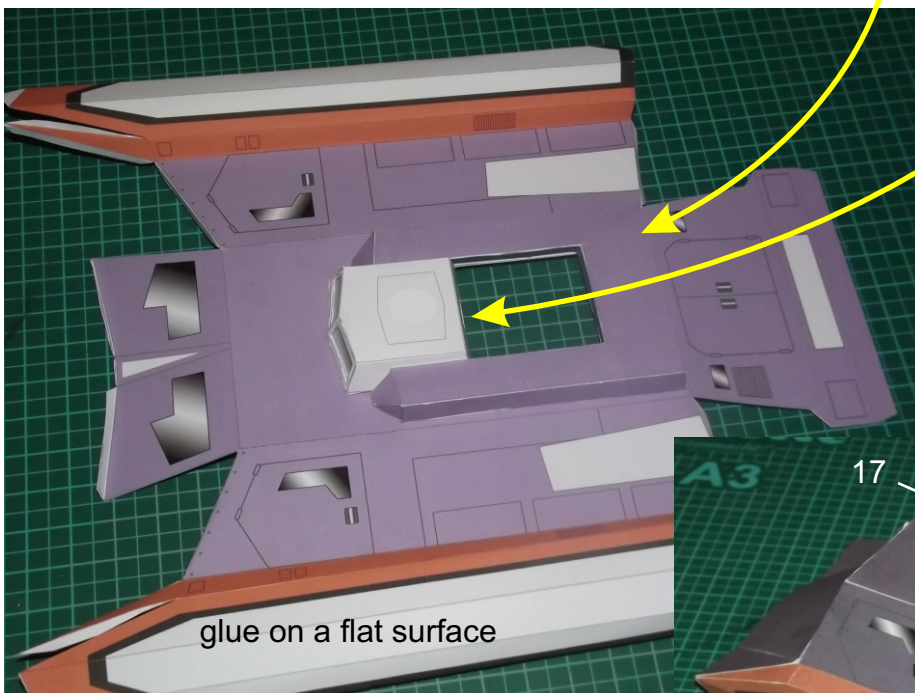
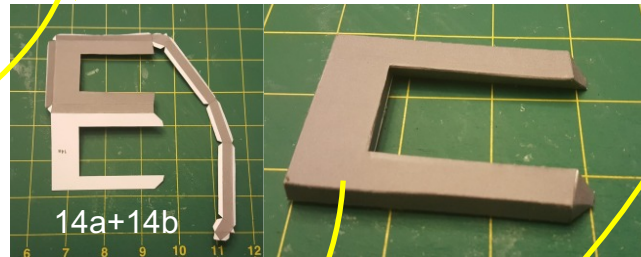
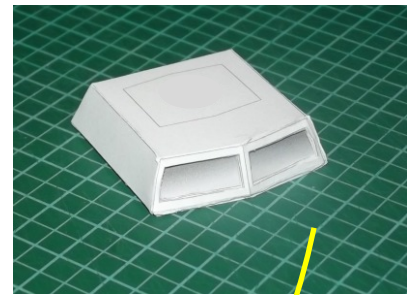
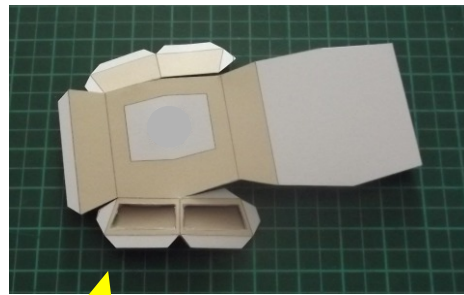
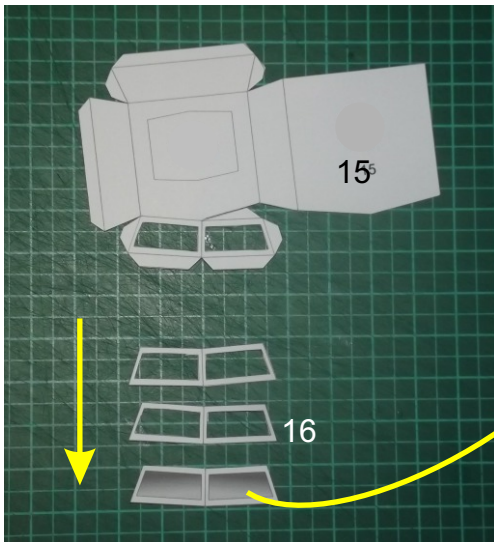
Assembly

NOTE: Some pictures show the Draconian Rover instead of the Mk. II. The parts in question are identical but have a different texture.

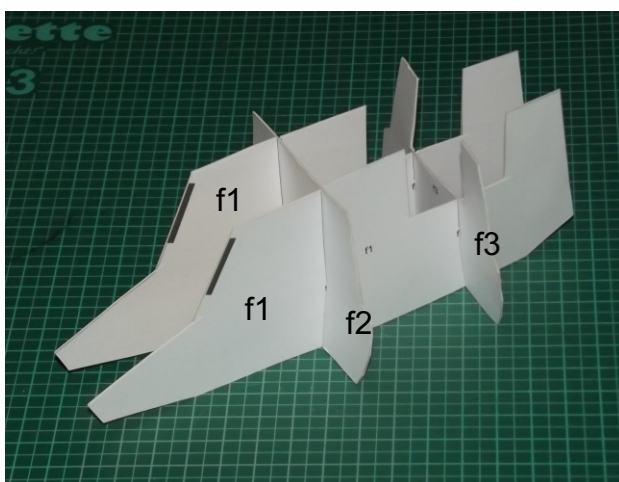
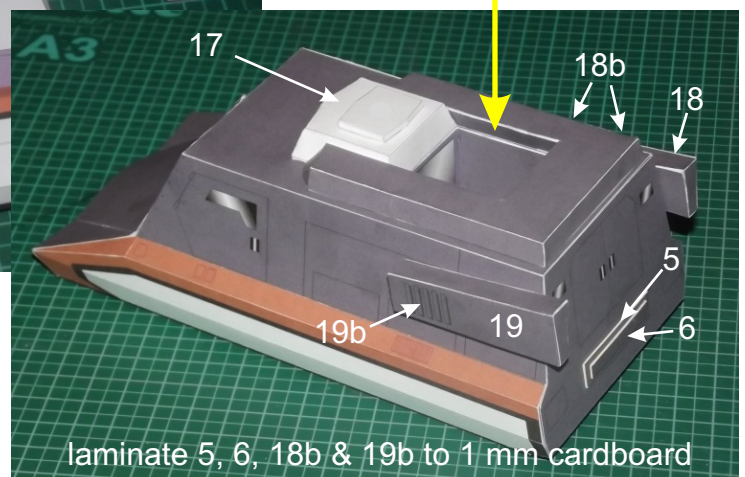


Score part 2 at the red lines. The black arrow marks the middle. Slightly curve the part horizontally (green arrows).



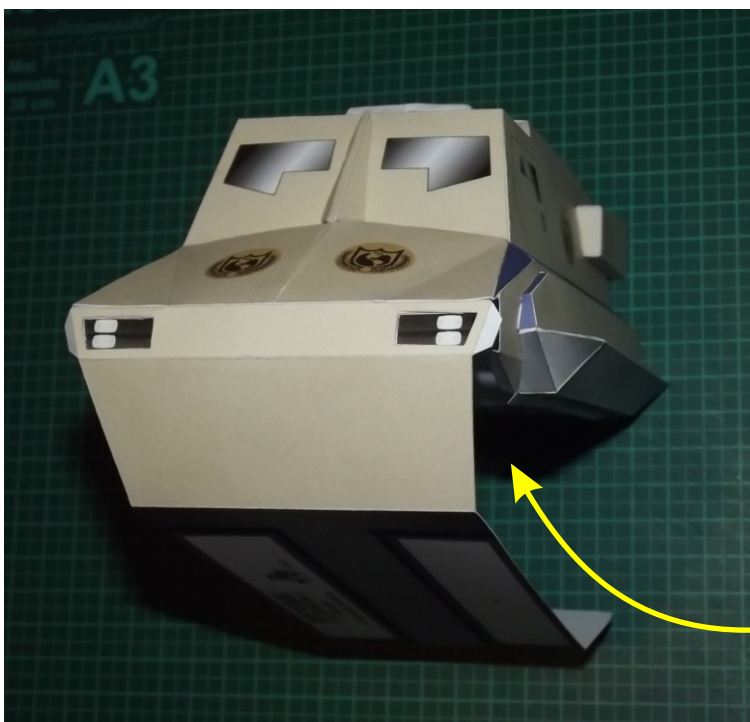
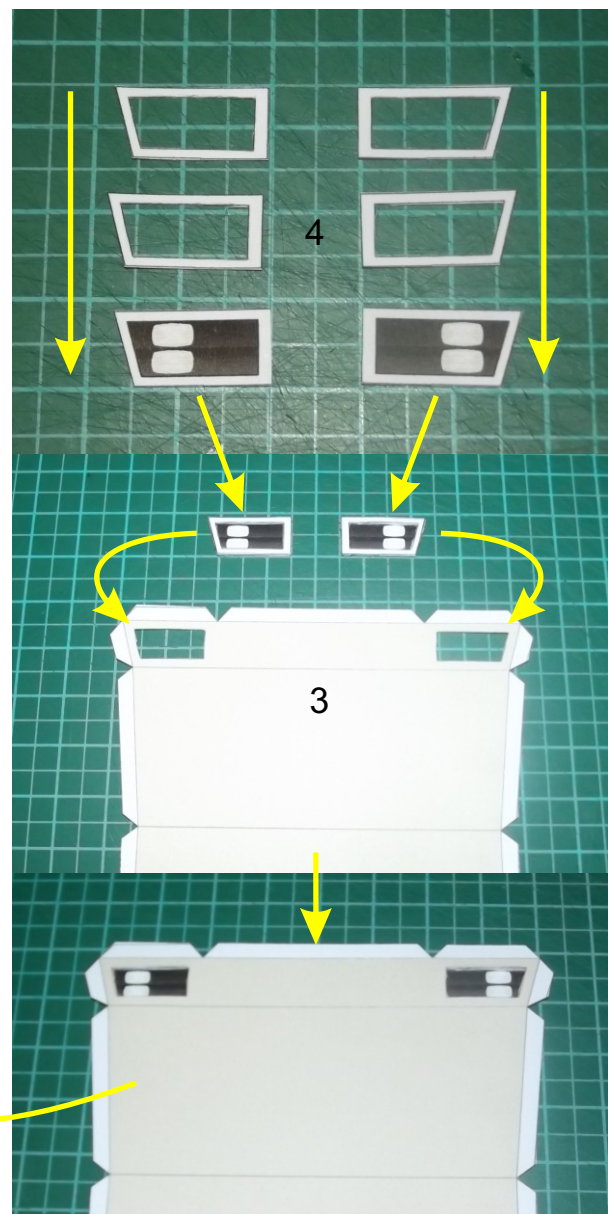
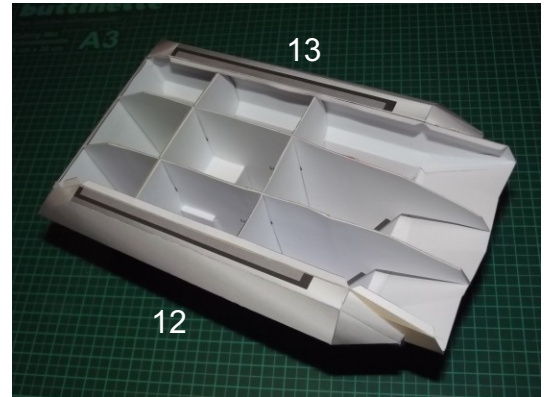
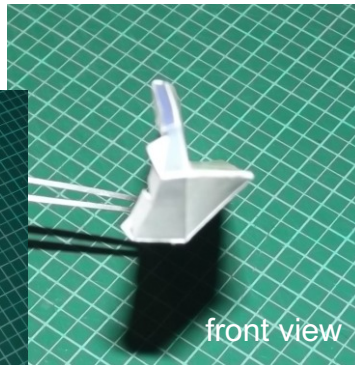
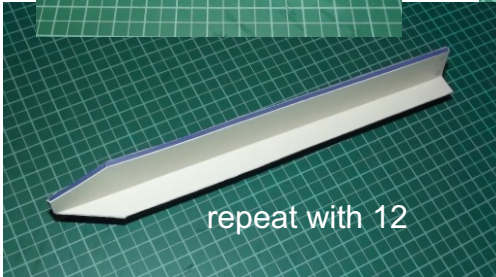
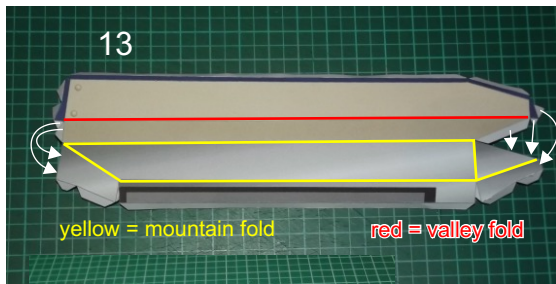


attach 7 & 2 and glue 1 together



Laminate the formers f1 - f3 to 1 mm cardboard. Put them together as shown and put the skeleton inside the chassis. You don't need any glue. If you build the vehicle with recessed windows cut off the dark grey areas on the formers.







OPTIONAL:
To add realism to the model glue silver/ mirror card or aluminium foil to the silver coloured parts of the wheel covers 12 & 13.

